

# Natural *versus* artificial: Comparative study of the root cementum and the nanotexturized surface of osseointegrated implants

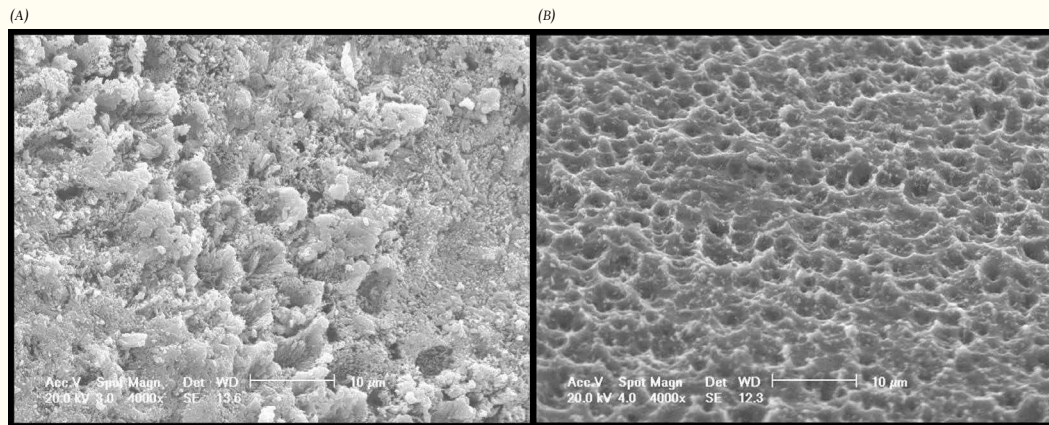
**Fernando Vacilotto GOMES**

MSc in Oral and Maxillofacial Surgery and Traumatology, PhD resident in Dentistry, Federal University of Rio Grande do Sul (UFRGS).

**Luciano MAYER**

Postdoc in Dentistry, Federal University of Bahia (UFBA). Professor, AGOR/RS

Comparison between two photomicrographs, obtained by scanning electron microscopy (under magnification of 4,000x), of the root surface of a tooth and the nanotexturized surface of an osseointegrated implant (NanoTite, BIOMET 3i). Note the strong similarity between the rugosity created by nature over the root cementum (A) and the texture of the implant surface (B).



**How to cite this section:** Gomes FV, Mayer L. Natural *versus* artificial: Comparative study of the radicular cementum and the nanotexturized surface of osseointegrated implants. *Dental Press Implantol.* 2014 Jan-Mar;8(1):95.

**Submitted:** December 1, 2013 · **Revised and accepted:** December 8, 2013

**Author's address:** Luciano Mayer. Rua Felipe Neri, 296/403 - Auxiliadora - Porto Alegre/RS — Brazil  
CEP: 90.440-150 - E-mail: contato@clinicamayer.com.br